



When it comes to linings,  
don't just follow the crowd.

Stand-out with *Elasti-Liner*<sup>®</sup>  
products from the experts.



# Stand-out with *Elasti-Liner*<sup>®</sup> products from the experts.

***Elasti-Liner*<sup>®</sup> represents a unique (patented) technology and an entirely new class of advanced, high-performance, secondary and primary containment linings.**

*Elasti-Liner*, widely known as "The Ultimate Containment Lining"<sup>®</sup> It is a containment lining which combines unequalled chemical resistance with unsurpassed crack-bridging and unmatched resistance to weathering and UV exposure. *Elasti-Liner* provides facility owners with the most advanced technology available in preventing ground water contamination, protecting foundations or tanks; and provides a cost effective alternative to coatings, fiberglass, and rubber or PVC linings. *Elasti-Liner* will provide a containment system that meets Federal SSPC (40 CFR 112), NPDES (40 CFR 122.26), EPA Container Storage Regulation (40 CFR 264.175), and all state regulations.

## ***Elasti-Liner* is...**

- Completely new generation of polymers
- Flexible with elongation from 115%—200%
- Competitive with less capable linings
- Applied by spray, brush or roller
- An ambient cured material
- Unaffected by weathering and UV light

## ***Elasti-Liner* is not...**

- Polyurea, Polyurethane, Polysulfide, or Silicone
- Rigid, inflexible or unforgiving
- Expensive to install
- A lining that requires specialized installation equipment
- Post cured or vulcanized for performance
- A polymer that loses crack bridging and chemical resistance properties with age

## **PRIMARY CONTAINMENT (Defined as Full Time Immersion)**

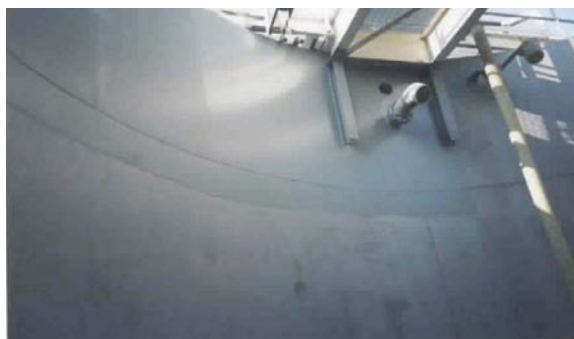
### ***Elasti-Liner I.2* Light Gray Color**

*Elasti-Liner I.2* is an elastomeric lining system that provides superior service to that of traditional rubber or PVC linings with unequalled permeation, chemical, and abrasion resistance.

### ***Elasti-Liner II.2* Dark Gray Color**

*Elasti-Liner II.2* system product has been engineered with a greater density of polymer and higher degree of cross linking to resist molecular permeation over the *Elasti-Liner I.2* product offering. This greater density improves the chemical resistance and temperature resistance in full time immersion conditions.

**See the technical matrix for examples of primary containment chemical resistance.**



Contact the Installation Expert:

Tel 248-388-3525 | Online: [www.ulticor.com](http://www.ulticor.com)



## SECONDARY CONTAINMENT

(Defined as 72 Hours Exposure to Splash and Spillage of Chemicals)



### **Elasti-Liner I** Light Gray Color

- Elasti-Liner I is suitable for intermittent immersion conditions in lining sumps, trenches and concrete tanks up to 170°F in aqueous environments

### **Elasti-Liner II** Dark Gray Color

- Elasti-Liner II is suitable for intermittent immersion conditions in lining sumps, trenches and concrete tanks up to 250°F in aqueous environments.

### **Elasti-Liner III** Charcoal Gray Color

- Elasti-Liner III is suitable for intermittent immersion conditions in lining sumps, trenches and concrete tanks up to 200°F in aqueous environments.
- Unlike other Elasti-Liner products Elasti-Liner III is 100% solids.

**See the technical matrix for examples of secondary containment chemical resistance.**



### **Elasti-Liner III Joint Sealant** Charcoal Gray Color

- Elasti-Liner III Joint Sealant is suitable for sealing cracks and joints in concrete for minimum secondary containment protection. *Secondary containment chemical resistance is similar to Elasti-Liner III.*



Member

**TeamEnviro**™

Visit: [www.TeamEnviro.com](http://www.TeamEnviro.com) for more information on this unique marketing group.

## Primary Containment Selection Matrix

	Sulfuric	Petroleum Oils	Solvents	Alcohols	Caustics	Hypochlorites	Hydrochloric	Nitric	Hydrofluoric	Plating Solutions	Min./Max. Thickness	Immersion Temp. F	% Elongation
<b>Elasti-Liner I.2</b>	75%	Cond	Cond	ALL	ALL	15%	37%	40%	20%	ALL	40/80	170°	150
<b>Elasti-Liner II.2</b>	98%	Cond	Cond	ALL	ALL	15%	37%	70%	49%	ALL	40/80	170°	150

**Note:** Cond = Conditional

Elasti-Liner® in primary containment is suitable for full time immersion conditions in tank linings, sumps, and trenches. Consult CCSI for specific recommendations to meet your chemical concentrations and temperatures. Immersion testing may be required. Mixtures of chemicals may not yield the same results stated herein.

## Secondary Containment Selection Matrix

	Sulfuric	Petroleum Oils	Solvents	Alcohols	Caustics	Hypochlorites	Hydrochloric	Nitric	Hydrofluoric	Plating Solutions	Min./Max. Thickness	Immersion Temp. F	% Elongation
<b>Elasti-Liner I</b>	75%	ALL	Cond	ALL	ALL	15%	37%	40%	20%	ALL	40/60	170°	180
<b>Elasti-Liner II</b>	98%	ALL	Cond	ALL	ALL	15%	37%	70%	49%	ALL	40/60	130°	200
<b>Elasti-Liner III</b>	40%	ALL	Cond	ALL	ALL	15%	37%	20%	NR	ALL	40/60	150°	115

**Note:** Cond = Conditional  
NR = Not Recommended

Adding water to a spilled or dripping acid causes an immediate exothermic reaction, which can quickly degrade any polymer lining in a high temperature run up. Always be sure to flood an spilled acid areas with extreme quantities of water in wash down to minimize any chance of a damaging exothermic reaction.

Elasti-Liner is a Registered Trademark of KCC Corrosion Control Co., LTD.



**Ultimate Corrosion Control Inc. (UCC)** is the leading service provider of all *Elasti-Liner* products and specializes in flexible containment linings for steel, or concrete. UCC is an exclusive KCC trained and approved *Elasti-Liner* installer.

We provide everything from basic corrosion protection for exterior services to high-performance coatings and linings for highly corrosive environments.

UCC specializes in innovative methods for solving; complex coatings and linings applications, demanding deadlines with safe engineered solutions and systems.



**Chemical Containment Systems Inc. (CCSI)** offers the experience of over 30 years in solving problems in process fluid storage, environmental compliance in secondary containment, and chemical resistant, tank lining and protective coatings. CCSI can assist you with specifications and advise you on the proper *Elasti-liner* selection.

CCSI believes that service is the key to any successful business and we base our philosophy on that precept. We look forward to working with you on your next containment project and join our growing list of satisfied customers.

Contact the Installation Expert:

Tel 248-388-3525  
www.ulticor.com



Contact the Product Expert:

Tel 800-825-7872  
www.chemicalcontainment.com